

Rig 27
www.BuyRigs.com

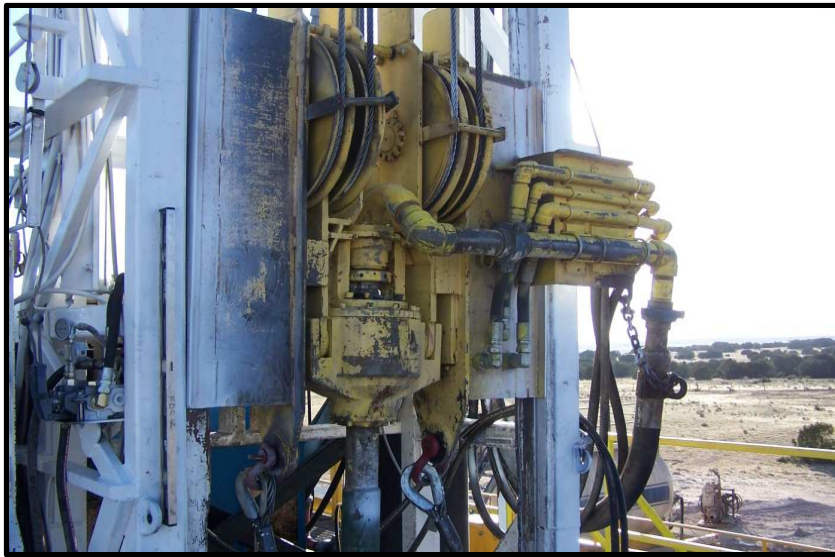


Drawworks:

- ❑ Gardner Denver 3000
- ❑ Single Drum 7/8" Line Rated @ 250,000lbs
- ❑ 325 hp John Deere, 5/1 Allison Transmission
- ❑ Hydromatic Brake, 15-1/2" Double w/ Closed System
- ❑ Rebuilt Drum, New Seals/Bearings (April 2008)

Top Drive:

- ❑ King Oil 85 ton 3,000 psi
4,300 ft. lbs tq. @ 100rpm
- ❑ 325 hp John Deere, P51 Hydraulic Pump



Mast:

- ❑ 54' pivot 59 ft. total mast
- 200,000 lb. hoisting capacity
- ❑ ¾" Support lines with cement anchors
- ❑ 3 Hydraulic Leveling Rams

Carrier:

- ❑ 4 Axle Pearce Carrier
- ❑ Unit Weight 32,000lbs Unit



Rig Substructure

- L.40.6'XW.8.5'XH.9'
- 3-80 GALLON AIR TANKS
- 2 OUTRIGGERS FOR ADDED SUPPORT
- 2 PIVOTAL ARMS TO SUPPORT DOGHOUSE



Rig Floor & Sub

- L.16'x W.8.5X H.13'
- B.O.P. ROLLER PLATE FOR INSTALLING & TRANSPORTING B.O.P.
- CONTROLS FOR TWO HYD. HOISTS AT EDGE OVERLOOKING V-DOOR
- 10,000' SURVEY WIRE LINE MACH.



Rig Ramps

- L.48' x 9'
- PIVOTAL BRACES FOR ADD SUPPORT



Top Dog House

- L.12'x W8.5'
- KNOWLEDGE BOX
- WALL SETUP FOR TOOLS
- EASTMAN GEOGRAPH
- LOCKERS AND STORAGE BENCH
- ELECTRIC ROOM HEATER



Support Lines

- FOUR ¾" LINES
- 4x4 STEEL REINFORCED
W/CEMENT ANCHORS



Steel Mud Pits

- OVER ALL 51.3'x11.3'
- CENT.HOUSE IS 12'x 9'
- 30 BBL. PREMIX PIT
- 300 BBL. SUCTION PIT
- 100 BBL. SHELL PIT
- 2- 50 HP VP MOTOR
W/GAUGHER PUMPS
- MIXING HOPPER MOUNTED
ON TOP OF PIT W/ 6'x 10'
DECK
- 3- HIGH PRESSURE STIRRING
JETS
- CAUSTIC MIXING BBL.



Hyd. House & Light Plant

- 120 GAL. DAY TANK BETWEEN
- OVERALL 35'x 9'
- HYD.HOUSE 10'x 9'
- JOHN DEERE 8.1 MOTOR w/P51 30 GALS @17,000 RPMs HYD.PUMP
- 2- 25 GALLON HYD. TANKS
- LIGHT PLANT 12'x 9'
- JOHN DEERE 12.5 MOTOR w/350 KW MAGNA MAX GENERATOR (480 V, 436 KVA, 525 AMP)
- HUSKY PRO AIR COMPRESSOR w/4-80 GALLON TANKS



Pump House

- OVERALL 30'x 25.5'
- 2- EMSCO 375 PUMPS
w/14" STROKE
- 2- CATERPILLAR d-353
MOTORS
- 22" WPI CLUTCHES
- PUMP MOTOR HAVE
REMOTE RADIATORS
w/ELEC.FANS
- HOUSE DIVIDES INTO
2 - 30'x 12.5 SKIDS
- 2- 40 GALLON DAY TANKS
- DAMPERS REPLACED &
CHARGED 4/08
- 2- ELECTRIC ROOM
HEATERS



#1 Water Tank

- OVER ALL 36'x 8'
- WATER TANK 28'x 8'x9.5'
- APPROXIMATELY 400 BBLs
- PUMP HOUSE 8'x 8'
- 2- 25 HP BALDOR MOTORS
w/2x3 MISSION PUMPS
- ELECTRIC ROOM HEATER



#2 Water Tank

- 32'x10.7'
- APPROXIMATELY 500 BBLs
- SKID LENGTH 40'
- SIDE HOSE RACKS
- #1 TANKS HAVE EQUALIZING HOSE



Parts / Change House

- OVERALL 40'x 8'
- PARTHOUSE 27'x 8'
- PARTS SHELVES ,BOLT BINS
- ELECTRIC ROOM HEATER
- CHANGE HOUSE 13'x 8'
- LOCKERS AND BENCH
- ELECTRIC ROOM HEATER



Fuel Tank

- 28.4'x 8'
- APPROXIMATELY 8000 GALLONS
- SKID LENGTH 35'
- ELECTRIC FUEL PUMP 20 GPM
- 4 – BALDOR FUEL FILTERS



Parts Box / Accumilator Skid

- 35'x 8'
- PARTS BOX 20'x 8'
- CONSOLIDATED ACCUMILATOR
- OIL BIN MOUNTED ON PARTS BOX



Catwalk

- 43'x 5'x 3.5'
- 3 – SETS OF PIPE RACKS



Miscellaneous

- 4 JTs – 6" DRILL COLLAR 29'+
- 20 JTs – 4" DRILL COLLAR 29' +
- 3 ½" SLIPS, 4" & 6" COLLAR SLIP
- 4" & 6" COLLAR CLAMPS
- 4" & 6" LIFTING SUBS
- 3 ½" THUR 12 ¾" BIT BREAKERS
- B.O.P. MANIFOLD
- BOUY LINE FOR AIR DRILLING
- 22" GENERAL MACHINE TONGS 2 3/8 – 7"

